

Producer Panel:


Putting sustainability to work on your farm



Suzanne Vold

Dorrich Dairy






Dorrich Dairy

Located in Glenwood, Minnesota

500 cow dairy

600 acres cropland

Land O' Lakes patron



3

Dorrich Dairy Mission and Value Statements

Not Just Another Herd

- *Doing Common Things, Uncommonly Well*
 - *Leaving it better than when we came*
- *Promoting agriculture through education*
- *Surrounding ourselves with great people*
 - *Doing the right thing*



4

Sustainable Practices...



Use biological predators to control flies



Milk with Lely Astronauts



Lely Juno to push up feed



Automatic Brush for cow comfort



LED lights throughout facility



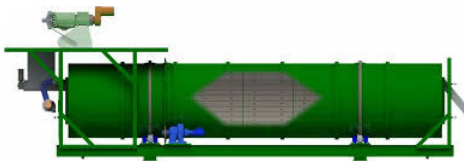
Variable speed drives on fans, separator and composter



Vita Plus Midwest Dairy Conference

5

Sustainable Manure Management



DariTech Manure Composter



DariTech Manure Separator



Clean with Lely Discoveries



Use composted manure solids for bedding



Vita Plus Midwest Dairy Conference

6

Sustainable Practices...



Cover Crops



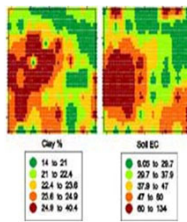
Community Events: Breakfast on the Farm



Buffer strips to protect bodies of water



Critical habitat areas



Veris technology for variable rate fertilizing



Water Quality Certified Farm



Vita Plus Midwest Dairy Conference

7

By 2050, the U.S. dairy industry collectively commits to:

ACHIEVE GREENHOUSE GAS (GHG) NEUTRALITY

OPTIMIZE WATER USE WHILE MAXIMIZING RECYCLING

IMPROVE WATER QUALITY BY OPTIMIZING UTILIZATION OF MANURE AND NUTRIENTS

U.S. Dairy Net Zero Initiative

FOR FIELD AND FARM

A collaboration of dairy organizations to advance research, pilots and new market development to make sustainability more accessible and affordable to farms of all sizes – an essential first phase to accelerate progress toward the 2050 goals.

FEED	ENTERIC METHANE	MANURE	ENERGY

Processor Working Group

FOR PROCESSORS

Led by the Innovation Center, a working group of more than 40 participants representing over 20 processing organizations convenes regularly and engages in facility-focused workstreams.

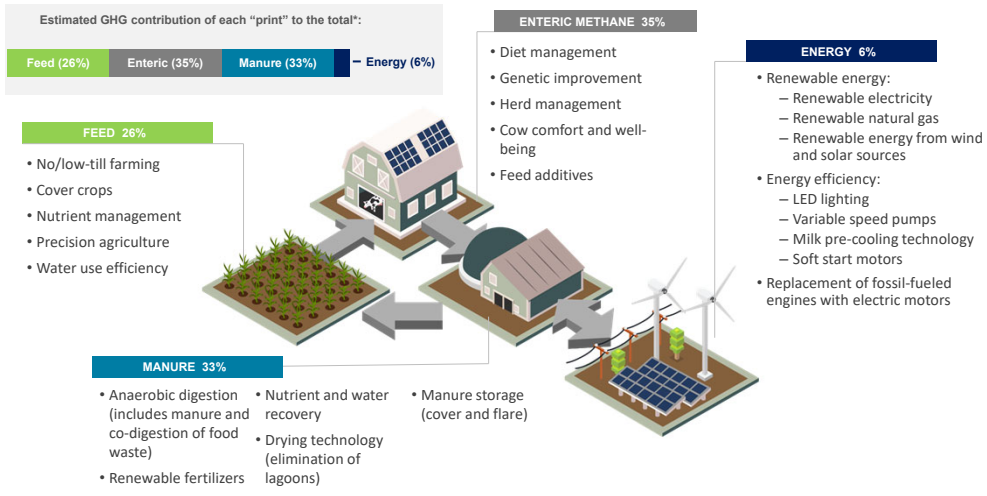
GHG	PACKAGING	WASTE	WATER



Vita Plus Midwest Dairy Conference

8

Mitigating Dairy's Environmental Footprint



Visuals do not represent all possible practices, technologies or benefits. Each farm can voluntarily contribute to net zero efforts based on their individual operation.
 * Adapted from Thoma 2013, Regional Analysis of greenhouse gas emissions from USA dairy farms. A cradle to farm-gate assessment of the American dairy industry, circa 2008



Vita Plus Midwest Dairy Conference

Industry-wide Collaboration



Each Organization Contributes Expertise in Area of Focus

 RESEARCH, PROMOTION, TRUST	<ul style="list-style-type: none"> Expand research base and knowledge Improve planning and measurement methodologies, models, tools and resources Identify opportunities to increase access to assistance that enables on-farm decision making and implementation Increase partner engagement and external funding
 INNOVATION CENTER FOR U.S. DAIRY HEALTHY PEOPLE • HEALTHY PRODUCTS • HEALTHY PLANET INDUSTRY CONVENER FOR ACTION AND REPORTING	<ul style="list-style-type: none"> Convene industry on precompetitive opportunities Set and oversee industry strategy and goals Drive alignment and action through governing bodies Report industry progress Engage Innovation Center partners
 ON-FARM SOLUTIONS, REVENUE STREAMS, TECHNICAL ASSISTANCE	<ul style="list-style-type: none"> Provide on-farm assessments, technical assistance and tailored expert recommendations. Enable access to environmental services markets for farmers Support environmental research Collaborate with NMPF, IDFA, USDEC on policy, regulatory Provide solutions-based resources for farmers, coops and other stakeholders



Vita Plus Midwest Dairy Conference

Industry-wide Collaboration



Each Organization Contributes Expertise in Area of Focus



NATIONAL DAIRY FARM PROGRAM, COOPERATIVE POLICY AND REGULATORY AGENDA

- Lead domestic policy and regulatory related to environment in collaboration with Newtrient, IDFA, and USDEC
- Work with USDEC on global policy, trade, and regulatory
- Evolve and implement FARM ES
- Support farmer engagement and communications through coop members
- Amplify thought leader communications/promotions



U.S. Dairy Export Council
Cheese | Ingredients | Global Markets

GLOBAL INSIGHTS AND PROMOTION

- Lead global policy, trade and regulatory related to environment in collaboration with Newtrient, IDFA, NMPF
- Amplify thought leader communications /promotions, with defined target audiences and globally relevant forums
- Enhance global market demand for U.S. dairy based on environmental story



IDFA
International Dairy Foods Association

PROCESSOR POLICY AND REGULATORY AGENDA

- Support Innovation Center Processor Working Group and environmental subgroups
- Contribute and assist in resource development
- Collaborate with Newtrient, IDFA, NMPF on policy, regulatory
- Support processor engagement and communications through members
- Amplify thought leader and consumer communications/promotions



Chuck Ripp

Ripp's Dairy Valley LLC





13



14



15



16



17



18

Jeff Endres

Endres Berryridge Farms LLC



19



20



21



22



23



24



25



26



Vita Plus Midwest Dairy Conference

27



Vita Plus Midwest Dairy Conference

28



29



30



31



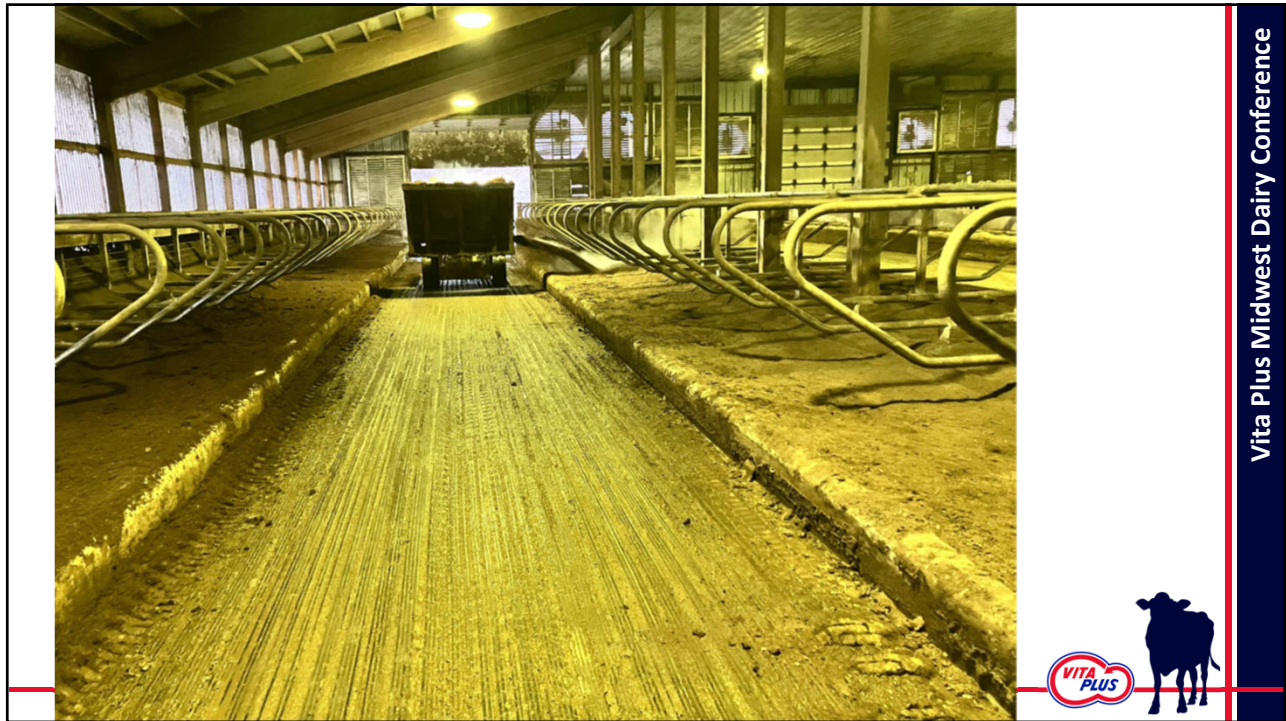
32



Vita Plus Midwest Dairy Conference



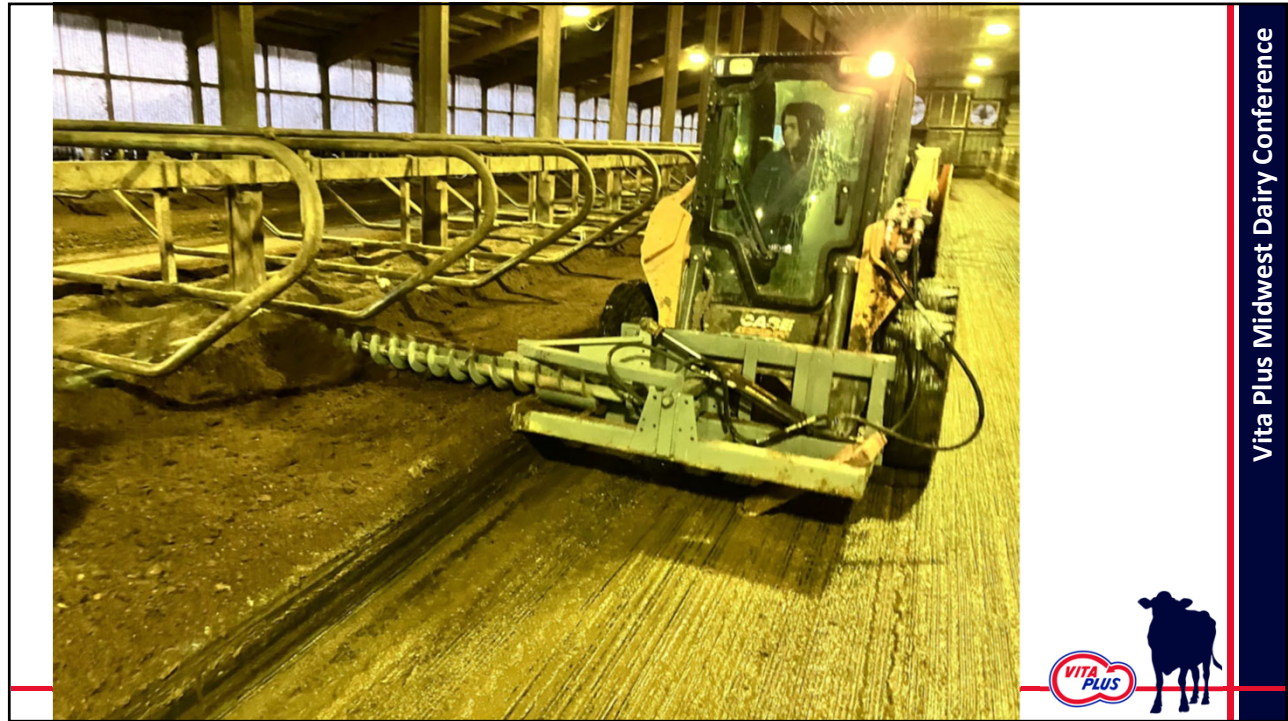
33



Vita Plus Midwest Dairy Conference



34



35



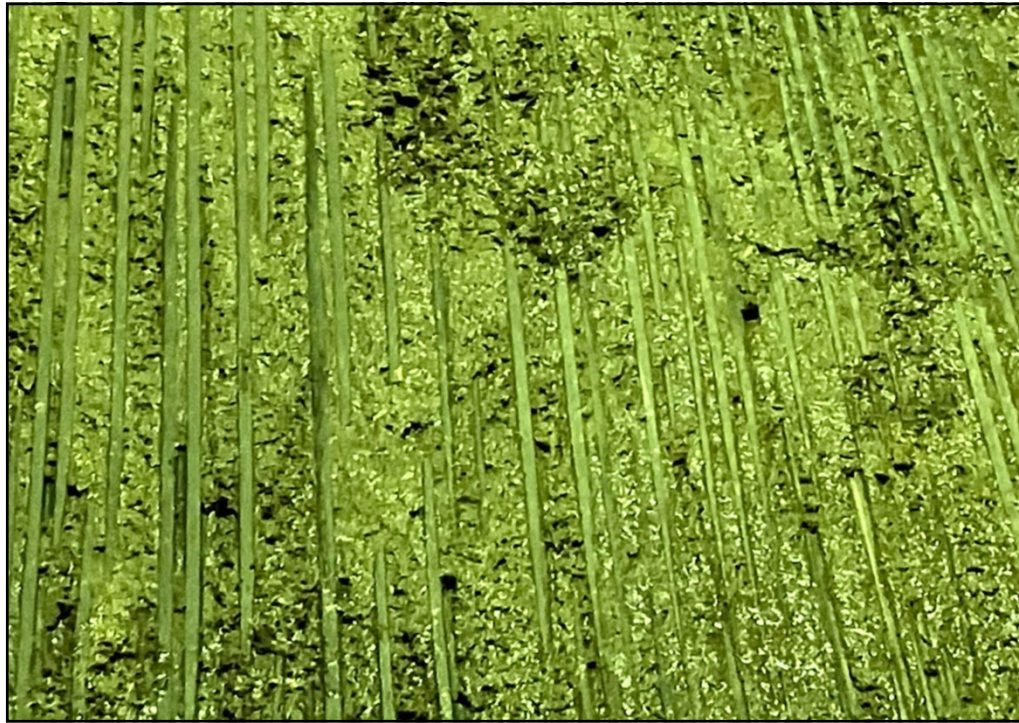
36



37



38



Vita Plus Midwest Dairy Conference

39



Vita Plus Midwest Dairy Conference

40

Producer Panel: Putting sustainability to work on your farm

Vita Plus Midwest Dairy Conference

