

Make it fit!

Orrson Custom Farming Ltd.

Jon Orr



1

- “I need it all right here.”
- “My neighbor has some acres he wants to sell me, I think it all can fit.”
- “We can’t put any in the second bunker because we are going to chop some”

2



3

How high can we go?



4

- 75 feet wide 300 feet long 8 feet tall walls
- $75 \times 300 \times 8 = 180,000$ cubic foot $\times .0225$
- 4050 tons between the walls
- 3 to 1 on sides = 12.5 foot more height
- $37.5 \times 262.5 \times 12.5 = 123,046 \times .0225$
- 2768 tons on top drive over
- 6818 tons total in safe, smart pile
- Over 12,000 tons on the pile

5

5182 extra tons put in the pile

- | | |
|--|--|
| • 12000 tons with 25% shrink
3000 tons lost | • 6818 tons with 10% shrink
682 tons lost |
| • $3000 \times \$45 = \$135,000$ | • $682 \times \$45 = \$30,690$ |

12000 tons with 10% shrink

1200 tons lost

$1200 \times \$45 = \$54,000$

\$81000 additional loss

6



7



8



9

\$81,000
\$81000
\$81000

10

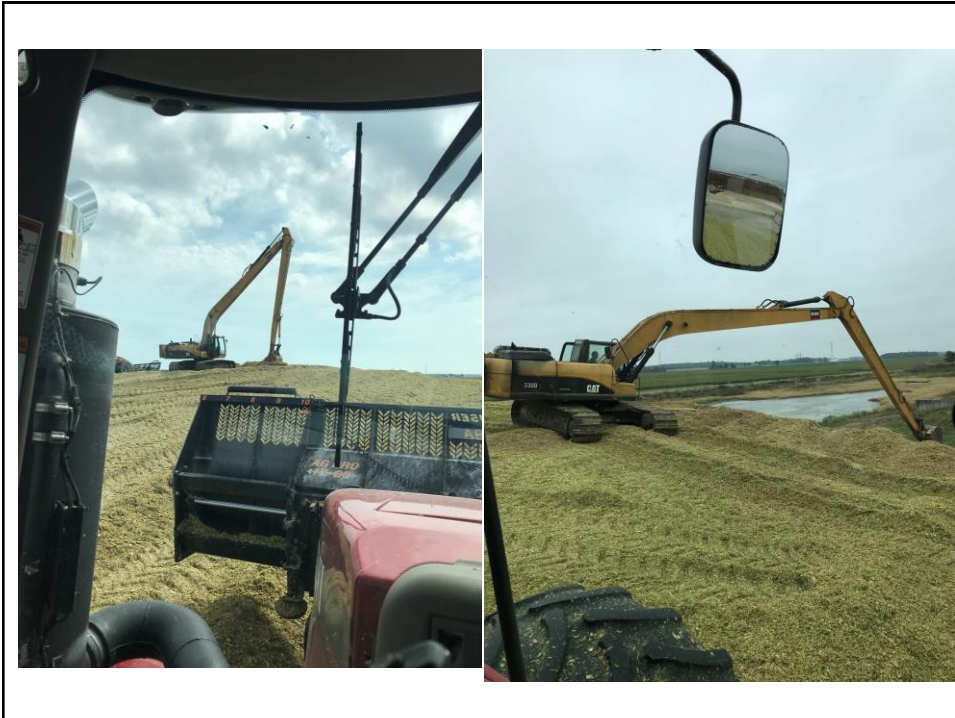


11



Pile a bit too steep???

12



13

Upright silo over filled?



14

California pile



15



16



17



18

\$81,000



19

12000 tons harvested
\$540,000

9000 tons available to feed
\$60 per ton as fed value

10800 tons available to feed
\$50 per ton as fed value

**On a 1000 cow dairy this
equals about \$90 per cow in
decreased cost or net income.**

20



21



22



23

How do we get more feed in?

- More weight of tractor
- More tractors
- Slower chopper
- Better pack tractor drivers

24

How do we get more concrete?

- Carefully discuss cost of additional shrink
- Ask nut, or silage specialist for input and help with numbers and explanations of costs involved
- Friendly reminders of additional cost of more tractors required to pack over filled piles
- Refusal to fill unsafe/ dangerous piles

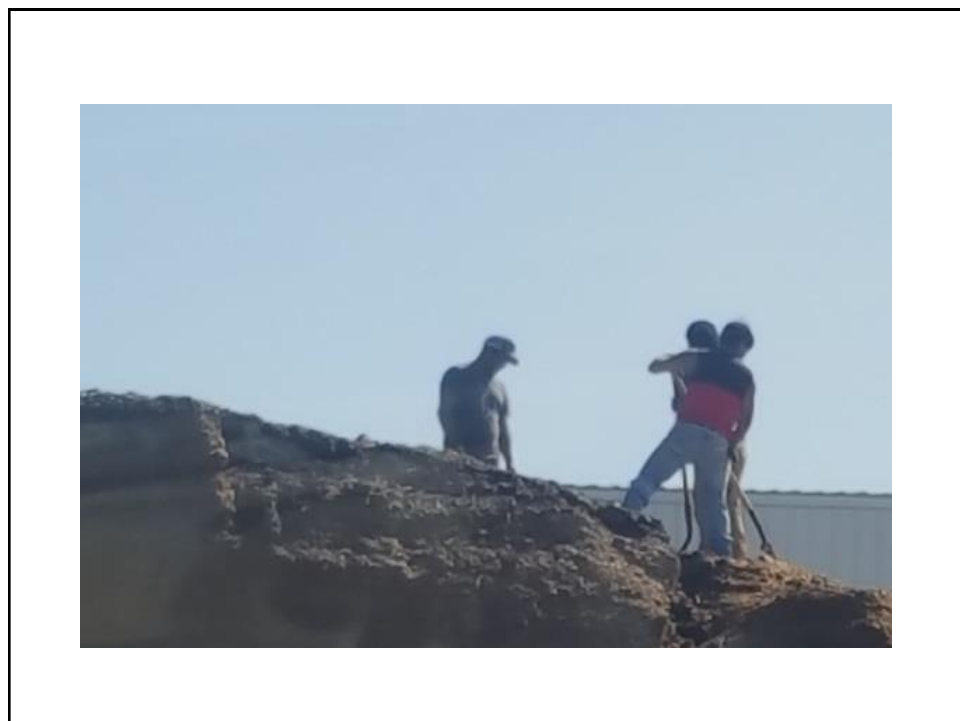
25



26



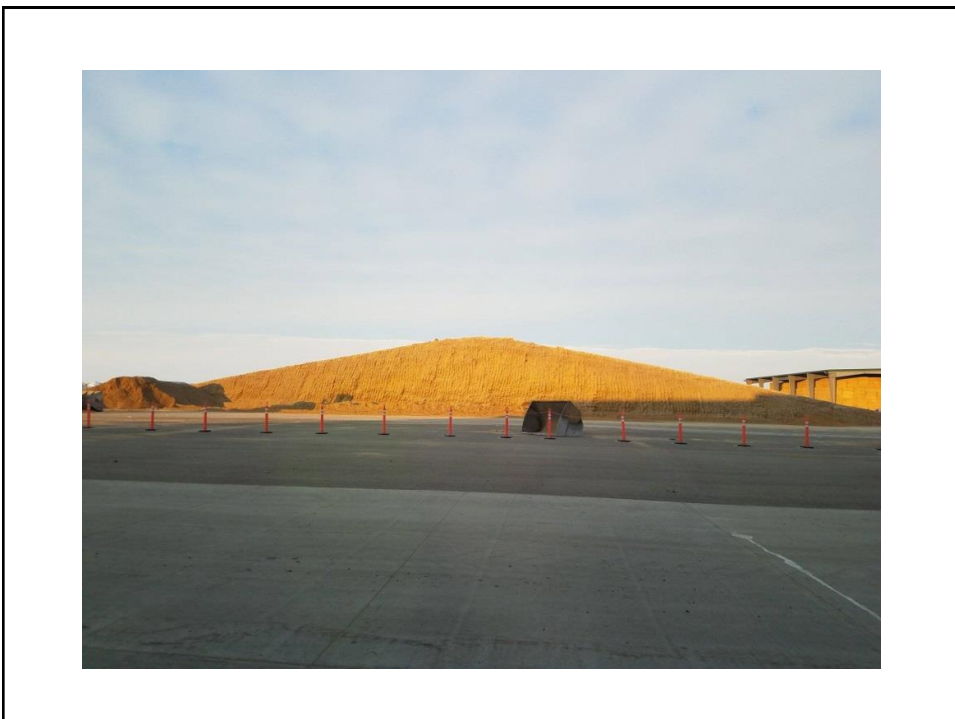
27



28



29



30



31

Every employee
home safely at
the end of
every season!!

32

