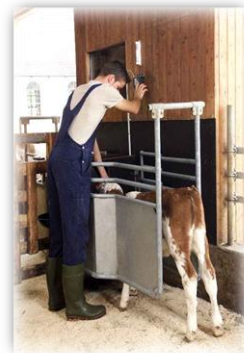


What to check when visiting a farm with automatic Calf Feeders

**FÖRSTER
TECHNIK®**
Automatisch besser.



Jan Ziemerink
Foerster Technik N.A



**FÖRSTER
TECHNIK®**
Automatisch besser.

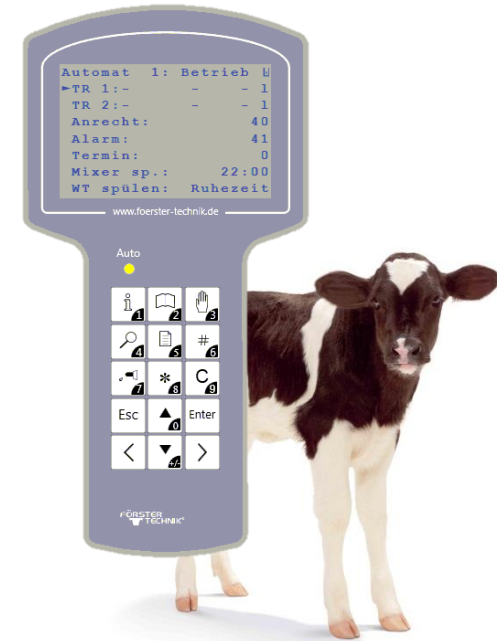
Overview

- Discuss training management of calves
- Checking milk powder, milk and detergent
- Checking suction hose and teat
- Check and discuss Cleaning program
- Check and asked about Calibration
- Set up priority control

Registering/Cancelling calves

- Registering the animals individually
- Registering the animals automatically
 - Automatic registration shortens the process of animal registration.
 - No need to enter animal's number and weight.
 - If an available number is identified in the feeding station, it is automatically allocated to the previously selected group.
 - Automatic registration remains active until in line „mode” you enter „no”.
 - Cancelled animals must be removed from the pen, otherwise they are automatically registered again.

On demand



Training management of calves (3 – 7 days old)

Use priority control so new calf can always drink

- Move calves to the feeder when hungry
- Put on the feeder use training pump
- When calves is drinking good leave calf alone
- Do not retrain calf till 10-12 hours after it drink
- Not more then 25-30 calves at once, if possible
- Train calves carefully on the feeder, use training pump with care - no fear, no hurry



If a calf has drunk 0.0 L, but the transponder is working, the calf is looking good and it drank alone the day before: There is no reason to train!

Checking milk powder, milk and detergent

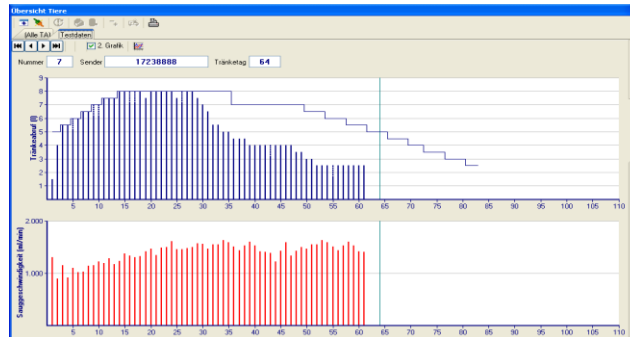
Daily

- Check the milk powder hopper
- Replenish the milk tank
- Check the detergent container
- Check the powder outlet of the milk powder hopper and of the additive dispenser
 - Remove incrustations as they impair dosing accuracy
 - Observe the safety instructions contained in the instruction manual!
 - Never touch the crushing hazard area while parts can move there.
 - Never use your fingers to clean the milk powder outlets but use the tool included in the scope of delivery!



CALF MANAGEMENT ON HANDHELD AND OR PC

- Check Alarm calves
- Check Consumption
- **Check Drinking speed**
- Check Visits with and with out milk
- Check Entitled calves
- Check all calves in pens

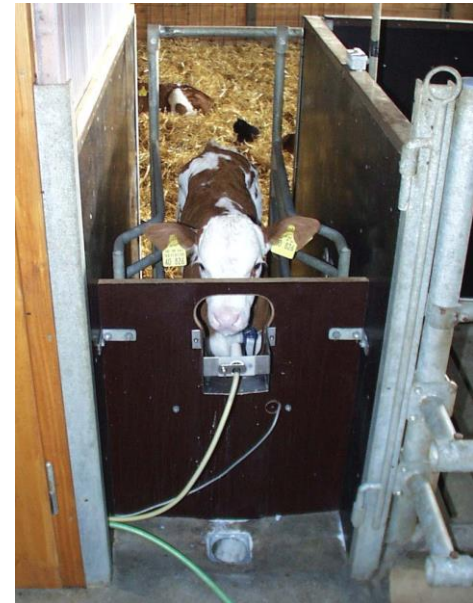


Checking suction hose and teat

It is imperative to regularly check the suction hoses and teats.

- If after cleaning deposits are still visible in the suction hoses or teat, you should manually clean them or replace them.

The suction hoses can also be cleaned continuously with automatic cleaning
Check the teat Daily and turn quarter turn



Mixer Jar, Heat Exchanger and Suction Hose Cleaning

- Mixer and heat exchanger are automatically cleaned up to 4 times a day (possible to clean true nipple)
- Set detergent according to the tag on the detergent (Higher temperature cleaning of feeders is now available 135-140F or 58c)
- We recommend to do a circuit cleaning every day this will clean all valves and hoses
- When circuit cleaning is running check nipples and clean, also turn nipple quarter turn this way the nipple will last longer

Calibration if calf feeder does not have auto calibration

- Carry out calibration of milk powder at regular intervals Milk powder at 2x weekly (daily is recommended)
 - Recalibrate milk powder, and additives at least each time you use a new batch
- Make sure that the powder outlets are free from deposits
- Use a good quality scale and measuring cup



Automatic calibration

- Intensive mixer is connected to load cell
- up to 4 times a day, normally 1 time a day is enough
- Automatically rectifies the calibration value
- Fully Automatic Calibration of Milk powder, milk and water
- Warning appears if difference is too high (**do not ignore the warnings**)



PRIORITY

- **Set priority for calves up to 7 - 10 days**

How it works:

- **If a calf with priority enters the feeding station, the machine immediately switches feed over to this calf.**

Thank You Very Much

Jan Ziemerink

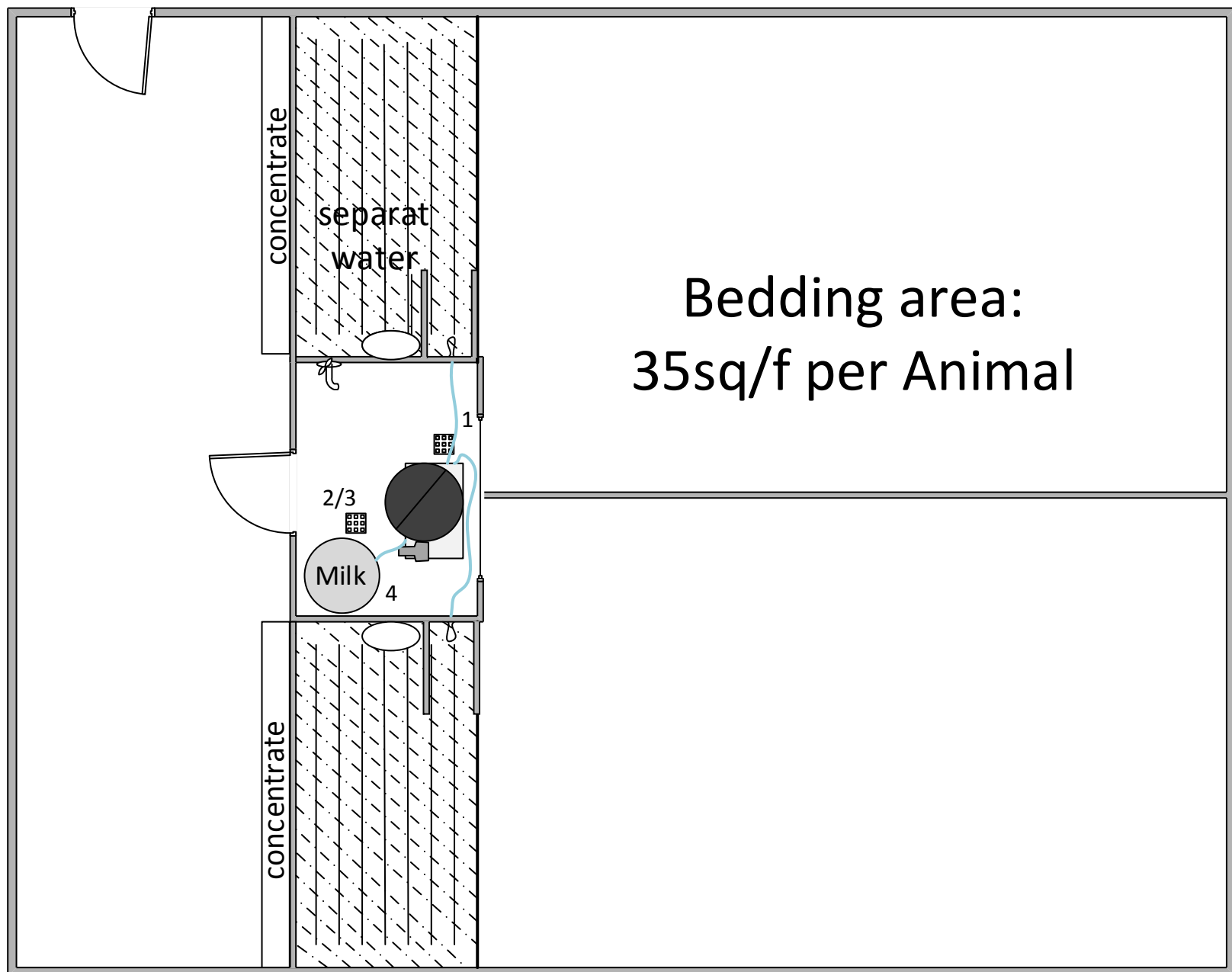
jan.ziemerink@foerster-technik.com

Cell 519-239-9756

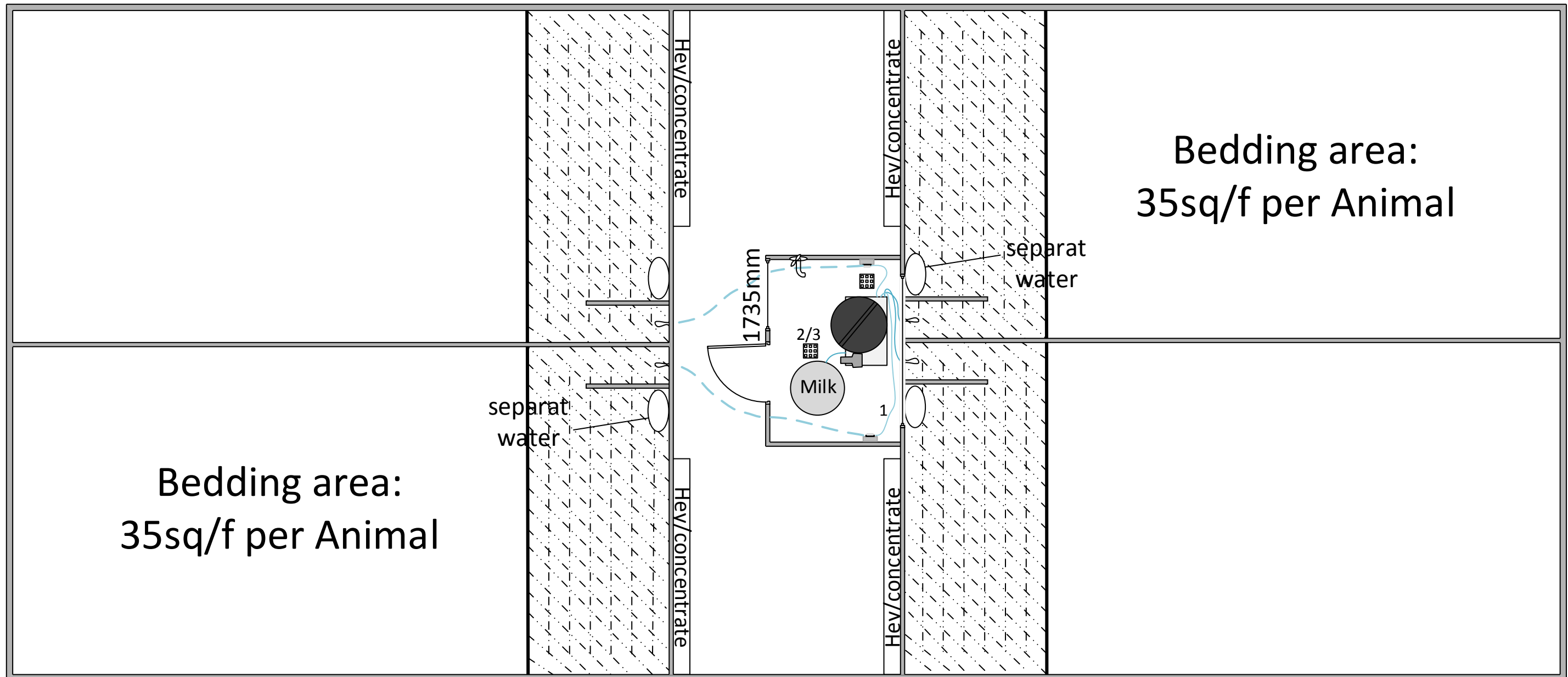
FOERSTER-TECHNIK CALF FEEDER DAILY ROUTINES

- 2x daily Check MP level in calf feeder fill when needed
- 2x daily check milk level in holding tank when feeding whole milk make sure milk is still fresh
- 1x daily clean milk powder outlet (not around auto calibration time)
- 2x daily Check calves in pens check for like cough, runny noses health swollen navels, swollen knees make sure calves are alert if you see something investigate more by checking this calves performance on the calf feeder, maybe give calf some electrolytes if needed consult veterinarian
- 2x daily check calves on feeder Hand held and or KM check for drinking speed, consumption, visits, and more
- 1x daily check hoses for deposits replace hoses if dirty
- 1x daily check, clean and turn nipple
- Check for warnings on calf feeder true out the day and do not ignore these warnings when they come up
- Have minimum 3 automatic cleaning per day
- With powder feeder 3x mixer cleaning
- With Combi feeder with only feeding milk powder set to 3x mixer cleanings and 1 Heat exchanger cleaning per day
- With Combi feeder and feeding whole milk set to 3 Heat exchanger cleaning per day
- Do one circuit cleaning per day (1x a week use an acid instead of the detergent)

519-239-9756 **FÖRSTER
TECHNIK®**
Automatisch besser.



1. Connections:
Automatic feeder: 1x 5,5KW/240V/30Amp
1x water, 1-6bar
2. Drain Automatic Feeder
3. Drain room
4. Milktank optional



1. Connections:
Automatic feeder: 1x 5,5KW/240V/30Amp
1x water, 1-6bar
2. Drain Automatic Feeder
3. Drain room
4. Milktank optional



40 Fit Feeding Schedule **For Rearing Calves On** **Robotic Calf Machines**

Optimal feeding plan:

Days	Quantity
P1 28 Days	8.0 to 8.0 liters F
P2 04 Days	12.0 to 9.0 liters R
P3 10 Days	9.0 to 9.0 liters R
P4 14 Days	9.0 to 2.0 liters R
Weaned 56 days	

F is 40 fit (40 fit setup for 02:00h) (P1 8.0-8.0 liters is used only to alarm animals the calves will be fed controlled adlib for 28 days max 2.0-2.5L every 2 hours)

R is restricted

Concentration set on 150grams per liter

Feeding limits:

7 day's 1.0 min 2.0 max

21 day's 1.5 min 2.5 max

28 day's 1.5 min 3.0 max

Jan Ziemerink
Foerster Technik N.A
cell 519-239-9756
jan.ziemerink@foerster-technik.com





Standard Feeding Schedule **For Rearing Jersey Calves On** **Robotic Calf Machines Only**

Feeding plan:

Days	Quantity
First 5 Days	5.0 to 6.0 liters
Next 10 Days	6.0 to 9.0 liters
Next 35 Days	9.0 to 9.0 liters
Next 10 Days	9.0 to 2.0 liters
Weaned at 60 Days	0.0 liters

Concentration set on 150grams per liter

Feeding limits:

First 15 days 1.0 to 1.6 liters min/max per feeding

Next 50 days 1.2 to 2.2 liters min/max per feeding

Jan Ziemerink
Foerster Technik N.A
Cambridge, ON
cell 519-239-9756
jan.ziemerink@foerster-technik.com





Feeding Schedule **For Rearing Calves On** **Robotic Calf Machines**

Optimal feeding plan:

Days	Quantity
First 5 Days	8.0 to 9.0 liters
Next 5 Days	9.0 to 10.0 liters
Next 32 Days	10.0 to 10.0 liters
Next 14 Days	10.0 to 2.0 liters
Weaned at 56 Days	

Concentration set on 150grams per liter

Feeding limits:

5 day's 1.0 min 2.0 max

15 day's 1.5 min 2.5 max

36 day's 1.5 min 3.0 max

Jan Ziemerink

Foerster Technik N.A

cell 519-239-9756

jan.ziemerink@foerster-technik.com

