

## The 30-30 Club Producer Panel Discussion

Brian Schilling  
Schilling Dairy  
Darlington, WI

Dr. BJ Jones  
Center Hill Veterinary Clinic  
Darlington WI



Stepping Forward

December 9 & 10 | Dairy Summit 2015 | Baraboo, Wis.



## Schilling Dairy Overview

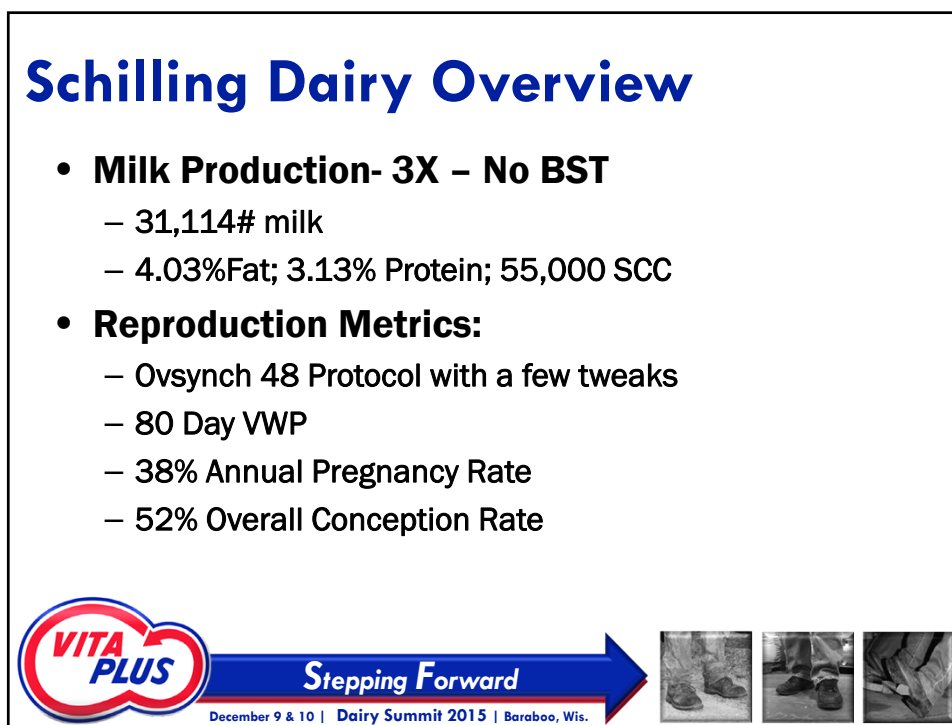
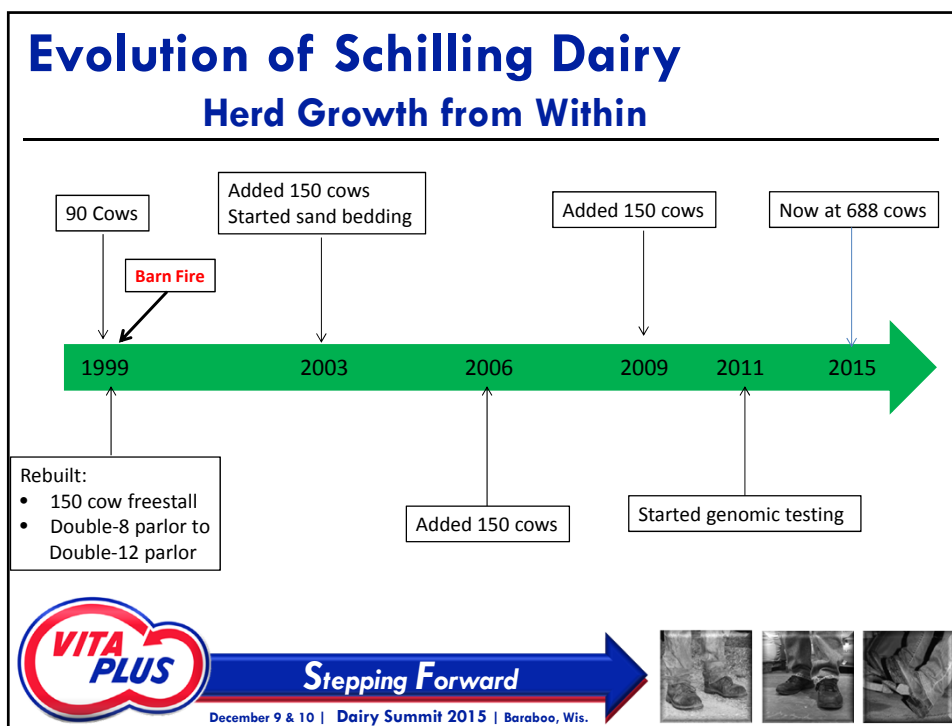
- **688 cow dairy**
  - 3X No BST
- **3 way partnership**
  - Bill & Barb
  - Andy & Sara
  - Brian & Bridget
- **1,700 acres**
- **Total employees**
  - 15 full-time
  - 4 seasonal



Stepping Forward

December 9 & 10 | Dairy Summit 2015 | Baraboo, Wis.





## Preg Rate

Date	Br Elig	Bred	Pct	Pg Elig	Preg	Pct	Aborts
11/17/14	105	81	77	101	37	37	3
12/08/14	108	83	77	106	37	35	9
12/29/14	91	70	77	90	33	37	3
1/19/15	76	56	74	74	25	34	3
2/09/15	84	59	70	81	30	37	0
3/02/15	80	63	79	80	27	34	3
3/23/15	89	56	63	88	35	40	4
4/13/15	85	64	75	85	33	39	1
5/04/15	94	74	79	94	40	43	1
5/25/15	77	54	70	76	26	34	2
6/15/15	76	51	67	73	25	34	0
7/06/15	66	49	74	66	22	33	0
7/27/15	74	54	73	72	25	35	0
8/17/15	89	63	71	88	36	41	1
9/07/15	95	71	75	94	38	40	2
9/28/15	101	80	79	101	48	48	0
10/19/15	97	78	80	0	0	0	0
11/09/15	90	72	80	0	0	0	0
<b>Total</b>	<b>1390</b>	<b>1028</b>	<b>74</b>	<b>1369</b>	<b>517</b>	<b>38</b>	<b>32</b>



Stepping Forward

December 9 & 10 | Dairy Summit 2015 | Baraboo, Wis.



## Conception Rate

Month	95% CI	%Conc	#Preg	#Open	Other	Abort	Total	%Tot	SPC
2014 October	30-64	47	14	16	0	1	30	2	2.1
2014 November	45-62	54	64	55	3	6	122	10	1.9
2014 December	44-62	53	64	57	5	9	126	10	1.9
2015 January	43-62	52	54	49	2	5	105	8	1.9
2015 February	41-61	51	44	42	4	2	90	7	2.0
2015 March	36-57	47	40	46	0	4	86	7	2.1
2015 April	48-66	57	64	48	2	4	114	9	1.8
2015 May	46-66	56	50	39	2	2	91	7	1.8
2015 June	37-58	47	37	41	4	1	82	7	2.1
2015 July	36-57	46	36	42	3	0	81	7	2.2
2015 August	41-61	51	45	43	4	1	92	7	2.0
2015 September	49-68	58	59	42	1	2	102	8	1.7
2015 October	44-62	53	60	54	2	0	116	9	1.9
<b>TOTALS</b>	50-55	<b>52</b>	<b>631</b>	<b>574</b>	<b>32</b>	<b>37</b>	<b>1237</b>	<b>100</b>	<b>1.9</b>



Stepping Forward

December 9 & 10 | Dairy Summit 2015 | Baraboo, Wis.



## Reproductive Protocol

- **Ovsynch 48:**

Sunday	Monday	Tuesday	Wednesday	Thursday	Friday	Saturday
		GnRH				
		PGF	PGF	GnRH-am AI-late pm		

Extra Lutalyse shot

- **DIM @ 1<sup>st</sup> Breeding: 80 days**
- **Will cherry pick standing heats prior to Ovsynch**



Stepping Forward

December 9 & 10 | Dairy Summit 2015 | Baraboo, Wis.



## Reproductive Protocol

- **Lutalyse shot at day 21**
- **No fresh cow checks at day 30**
- **Will breed 21 days after AI if standing heat**
- **Preg Check Protocol**
  - No GnRH resynching 7 days prior to preg check
  - Preg check at day 30
  - If open:
    - Has CL: Ovsynch
    - No CL: GnRH & check 7 days later
  - Recheck at day 60



Stepping Forward

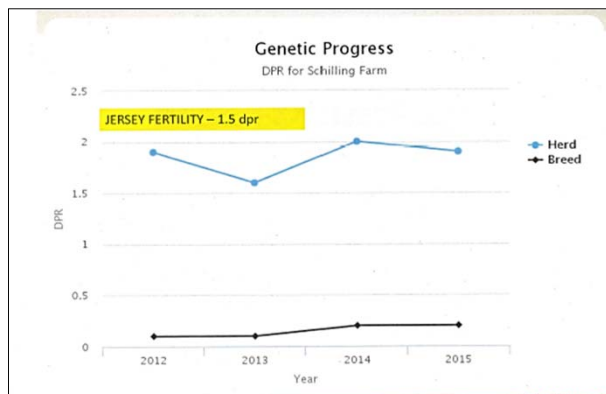
December 9 & 10 | Dairy Summit 2015 | Baraboo, Wis.



# Reproductive Keys

## 1. DPR Emphasis

- Daughter Pregnancy Rate



Stepping Forward

December 9 & 10 | Dairy Summit 2015 | Baraboo, Wis.



# Reproductive Keys

## 2. Forage Quality & Lots of Sand!

- Bags vs Bunkers
- Cow Comfort - Cow Comfort - Cow Comfort



Stepping Forward

December 9 & 10 | Dairy Summit 2015 | Baraboo, Wis.



## Sand & Manure Challenge?

**YOU NEED "BIG BOY"!**



**Stepping Forward**

December 9 & 10 | Dairy Summit 2015 | Baraboo, Wis.



## Reproductive Keys

### 3. Transition Management/Energy Balance

- Intakes - Intakes - Intakes
- Cow Comfort
- High quality straw - Corn silage diet
  - Reashure & amino acid balancing
  - Minimal anions used



**Stepping Forward**

December 9 & 10 | Dairy Summit 2015 | Baraboo, Wis.





## Reproductive Keys

### 4. Fresh cow protocols

- Every fresh cow is pumped on day of calving
- Every fresh cow is temped for the first 20 days
- Ketosis checks on done on day 6 and day 11
- Minimize metabolics through attention to detail and great fresh cow management



Stepping Forward

December 9 & 10 | Dairy Summit 2015 | Baraboo, Wis.



## Reproductive Keys

### 4. Great Employees & Family Involvement

- It is the people that make the difference
- Commitment & Passion



Stepping Forward

December 9 & 10 | Dairy Summit 2015 | Baraboo, Wis.



## Final Thoughts

- **Goal is to continue to increase preg rate & production:**
  - >40% preg rate
  - 100# plus on milk production average (No BST)
  - Steady improvement & growth
- **Challenges:**
  - Facilities bottleneck/Overcrowding
  - Dry cow facilities
  - Future of Ovsynch protocols



Stepping Forward

December 9 & 10 | Dairy Summit 2015 | Baraboo, Wis.



## Thank You



*Brian Schilling  
Dr. BJ Jones  
Schilling Farms  
Darlington, WI*



Stepping Forward

December 9 & 10 | Dairy Summit 2015 | Baraboo, Wis.

