

Gestation table for cows

Date bred	Date due (283 days)	Date bred	Date due (283 days)
Jan. 1	Oct. 11	June 30	Apr. 9
Jan. 11	Oct. 21	July 10	Apr. 19
Jan. 21	Oct. 31	July 20	Apr. 24
Jan. 31	Nov. 10	July 30	May 9
Feb. 10	Nov. 20	Aug. 9	May 19
Feb. 20	Nov. 30	Aug. 29	June 8
Mar. 2	Dec. 10	Sept. 8	June 18
Mar. 12	Dec. 20	Sept. 18	June 28
Mar. 22	Dec. 30	Sept. 28	July 8
Apr. 1	Jan. 9	Oct. 8	July 18
Apr. 11	Jan. 19	Oct. 18	July 28
Apr. 21	Jan. 29	Oct. 28	Aug. 7
May 1	Feb. 8	Nov. 7	Aug. 17
May 11	Feb. 18	Nov. 17	Aug. 27
May 21	Feb. 28	Nov. 27	Sept. 6
May 31	Mar. 10	Dec. 7	Sept. 16
June 10	Mar. 20	Dec. 17	Sept. 26
June 20	Mar. 30	Dec. 27	Oct. 6



Vita Plus Corporation
 PO Box 259126, Madison, WI 53725-9126
 800.362.8334 • www.vitaplus.com

(REV 3.18)

*Improved breeder cow health
and reproduction*



Vita Plus Beef Program

*Quality Products...
Where sound nutrition starts*

BROOD COW MINERALS

800.362.8334
www.vitaplus.com

BROOD COW MINERALS



Allowing cattle to maximize their genetic potential should be the focus of every beef producer. To accomplish this, you need to implement sound nutrition and management practices. Reproduction, milk production, calf weight gains, and cow longevity are all affected by proper nutrition, including minerals and vitamins.

Vita Plus Brood Cow Minerals are formulated to properly balance the diets of brood cows consuming forages as the main portion of the diet. Each mineral is designed to accommodate your cow herd's needs based on stage of production (breeding, gestation and lactation), forage quality and type.

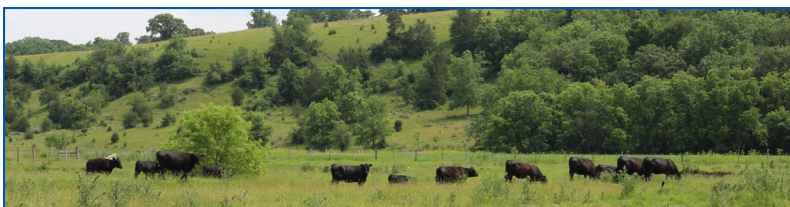
Each mineral product includes the highest-quality ingredients to allow for maximum bioavailability and utilization. Each type of mineral includes a breeder option with increased trace mineral concentration, a full rate of Availa-4® from Zinpro, and higher rates of vitamins A, D, and E. Also available is the option to include Bio-Sel™ organic selenium in your breeder mineral for areas where improved selenium status is a priority. These breeder products are intended to be fed 30 to 60 days pre-calving through breeding.

Cow-Pro Mineral

Cow-Pro Mineral is formulated for cattle receiving diets supplemented with corn co-products or other instances where no supplemental phosphorus is needed.

Hi-Mag Mineral

Hi-Mag Mineral is designed to be fed to cattle consuming fast-growing, lush pastures that have historically resulted in grass tetany instances or other areas where grass tetany may be of concern. Hi-Mag Mineral should be fed 30 days before the onset of grass tetany season and continue until grass growth slows. Breeder and Breeder with Bio-Sel options are available to supplement calving and breeding animals during the time period where grass tetany and reproductive needs coincide.



Green 1206 Mineral

Green 1206 Mineral is formulated to balance the diets of range or pasture cattle and cattle consuming stored forages. Green 1206 Mineral is designed to be fed to cattle receiving high-quality forage, being supplemented with grain or corn co-products, or other situations where phosphorus supplementation is of lower priority. Green 1206 Mineral is not recommended under most instances for lactating animals unless phosphorus levels in the basal diet are already adequate. The Breeder and Breeder with Bio-Sel options, under most situations, are the products of choice for cattle being supplemented grain or corn co-products during the breeding season.

Red 1208 Mineral

Red 1208 Mineral is formulated to balance the diets of range or pasture cattle and cattle consuming stored forages. Red 1208 Mineral should be fed to lactating cattle with average to good milk production consuming average- to good-quality forage. The Breeder and Breeder with Bio-Sel options, under most situations, are the products of choice to maximize reproduction for spring calving herds.



Gold 1111 Mineral

Gold 1111 Mineral is formulated to balance the diets of range or pasture cattle and cattle consuming stored forages. Gold 1111 Mineral should be fed to cattle with good to high milk production and receiving low- to average-quality forage, including cattle grazing corn stalks or mature, dormant grasses typically low in phosphorus. The Breeder and Breeder with Bio-Sel options, under most situations, are the products of choice for high-lactating herds or for fall-calving herds with little to no supplementation during the breeding season.